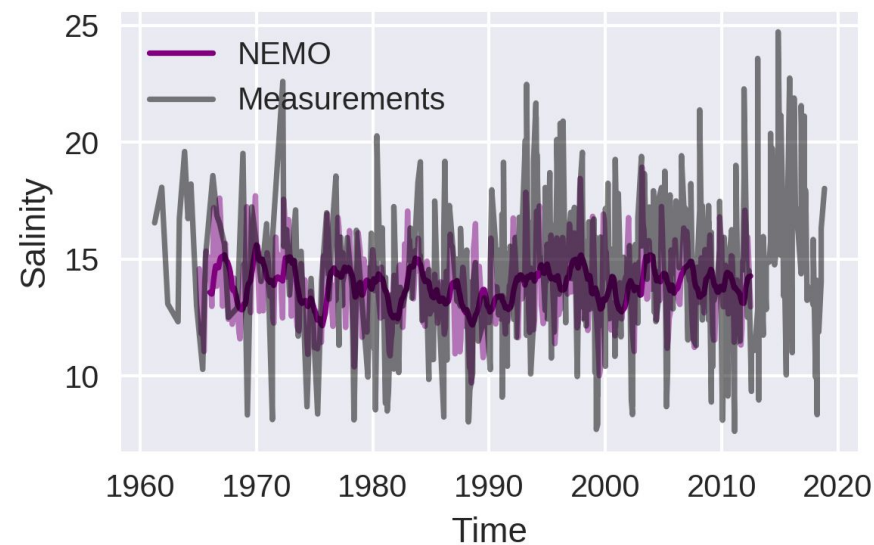
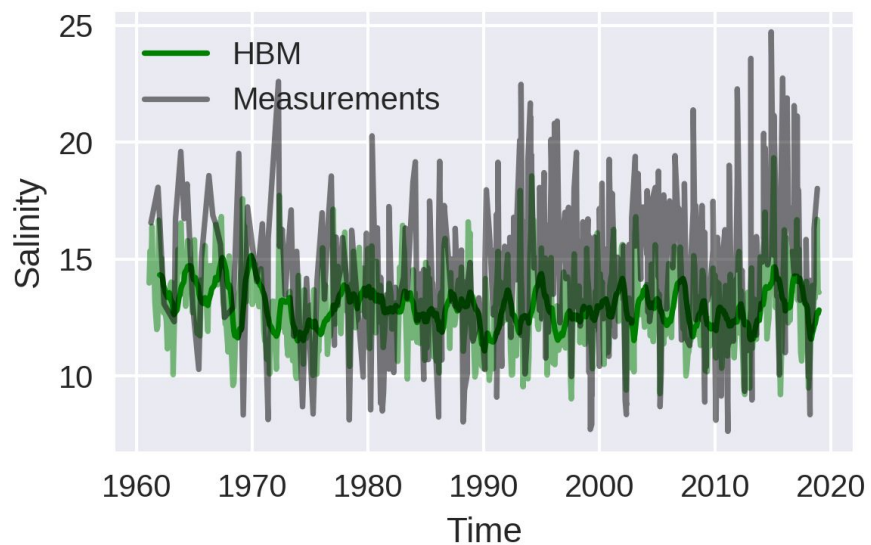
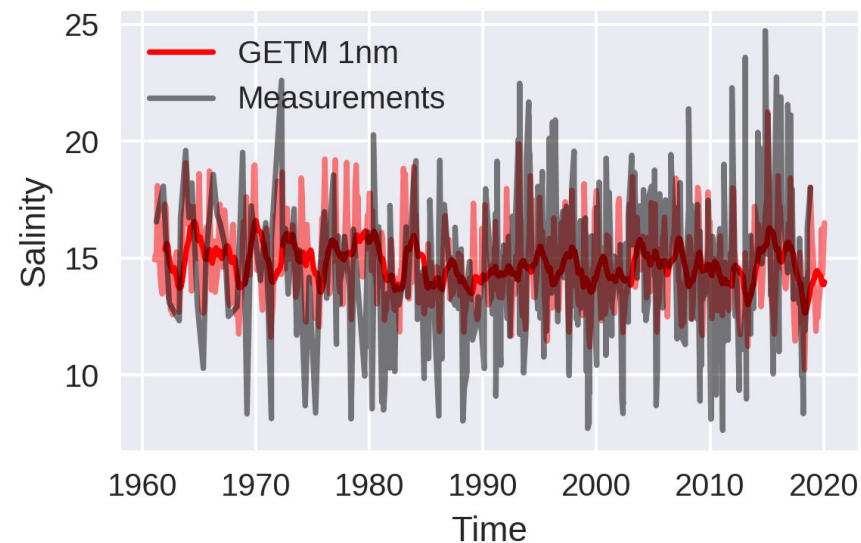
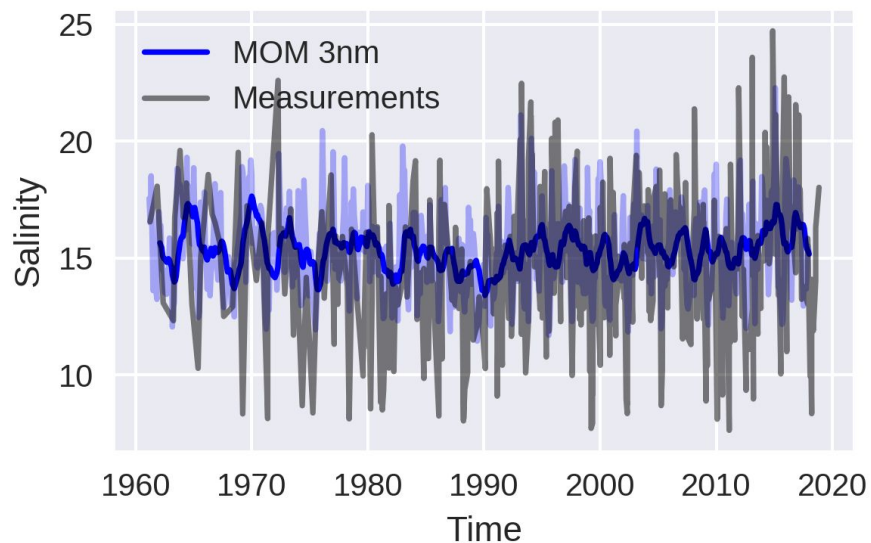


BMIP

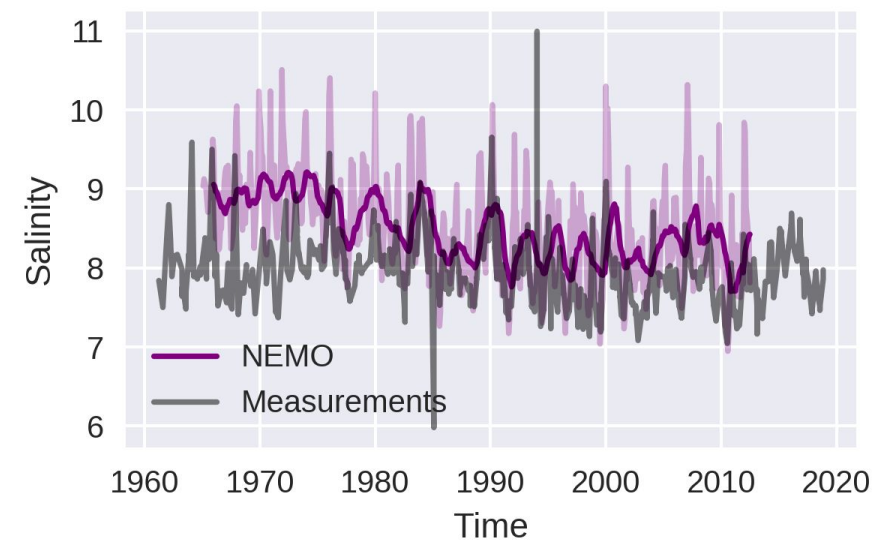
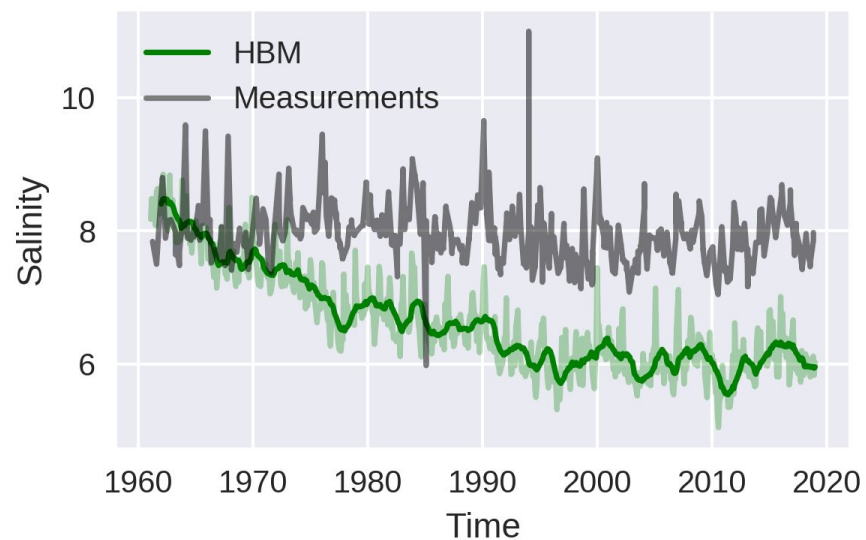
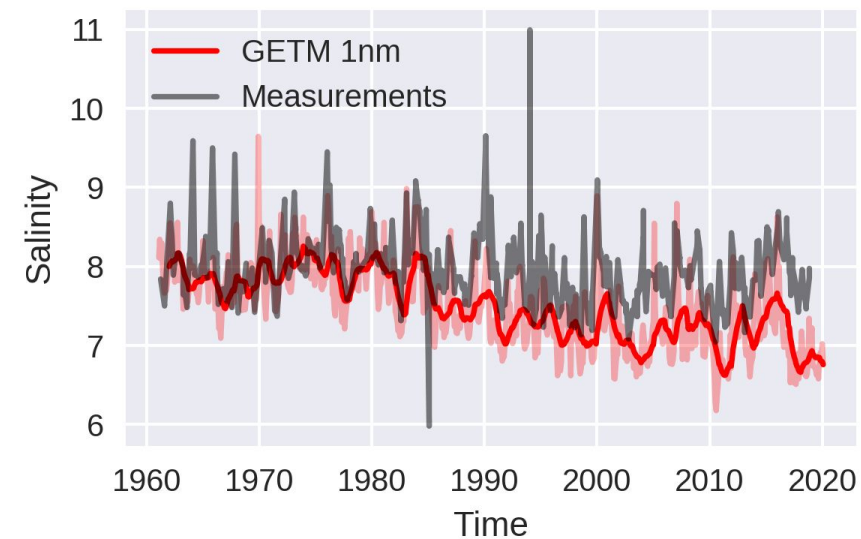
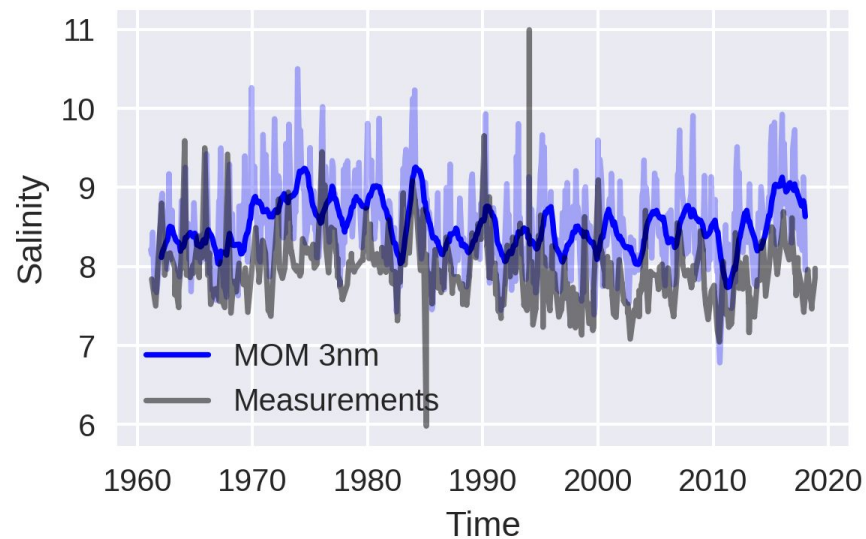
Deep salinity dynamics

Station BY2 Bottom



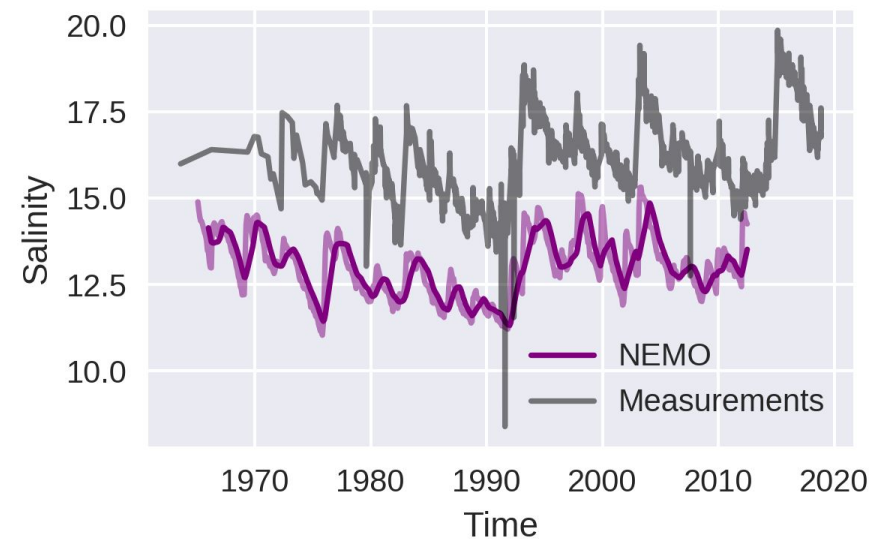
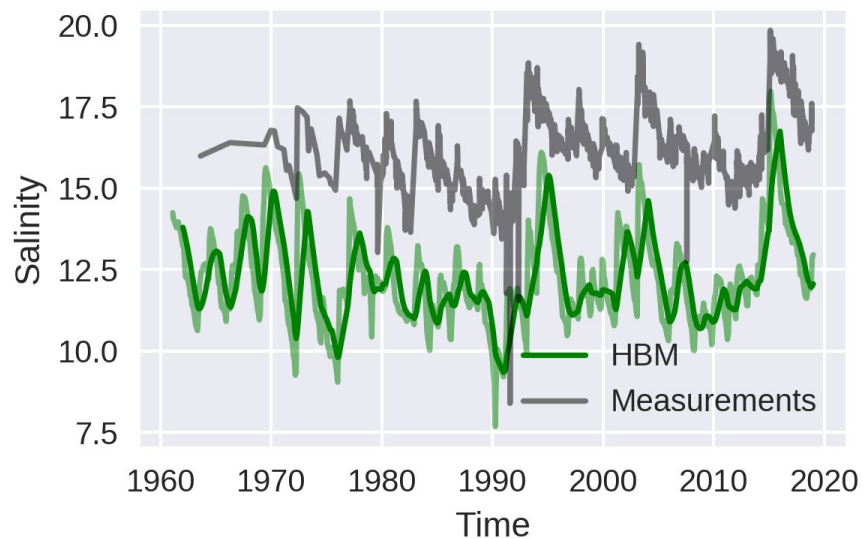
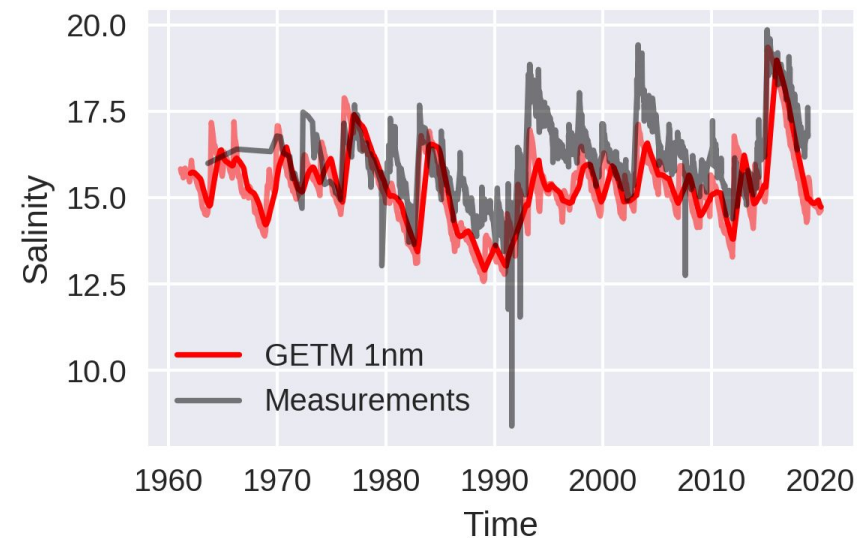
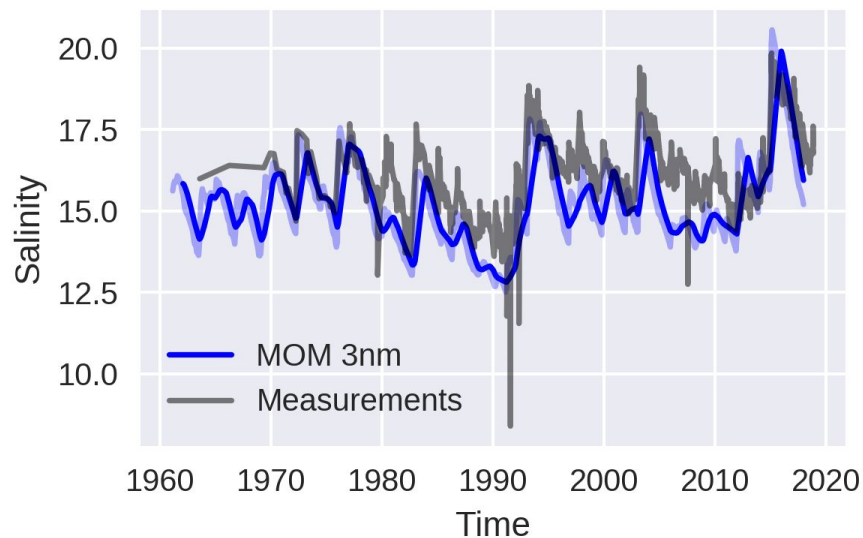
- Data: Odin2

Station BY2 Surface



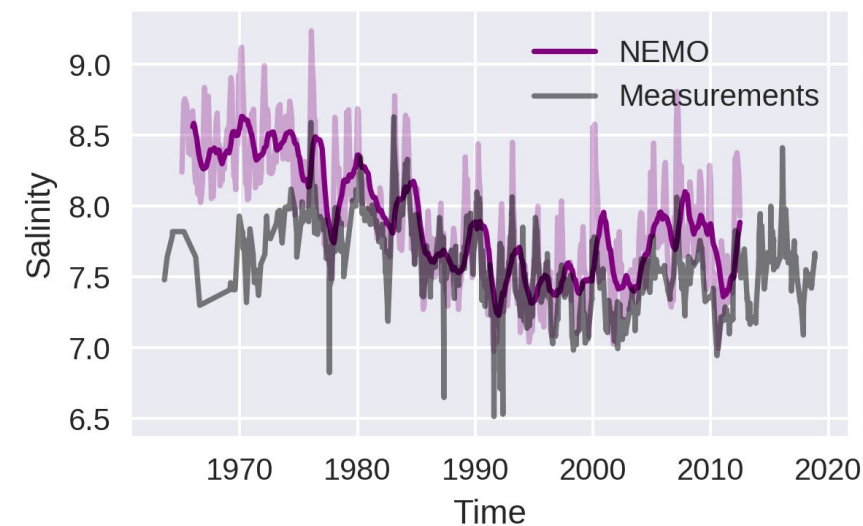
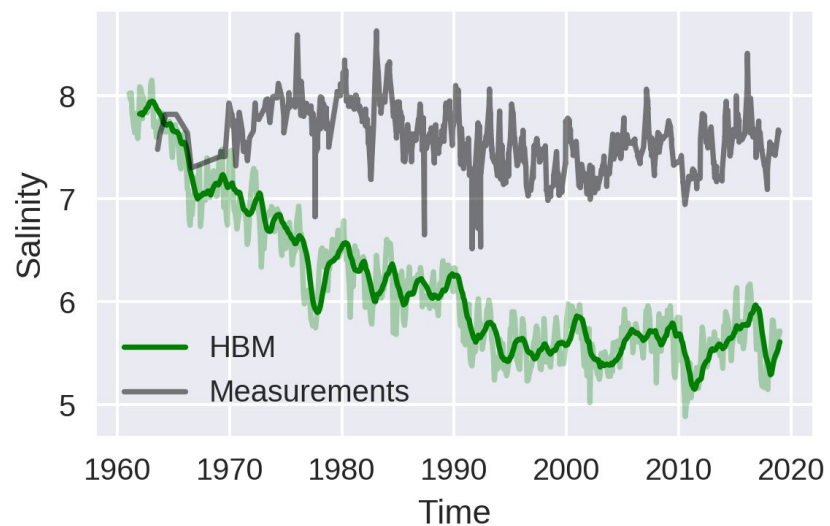
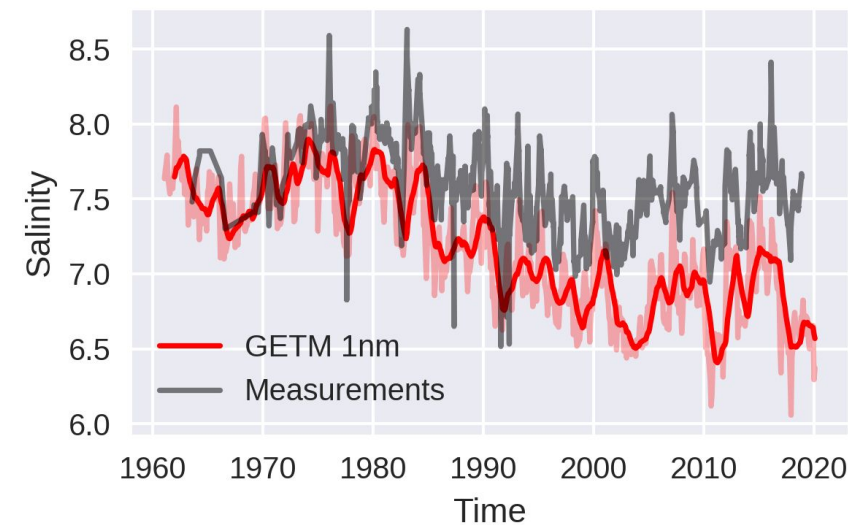
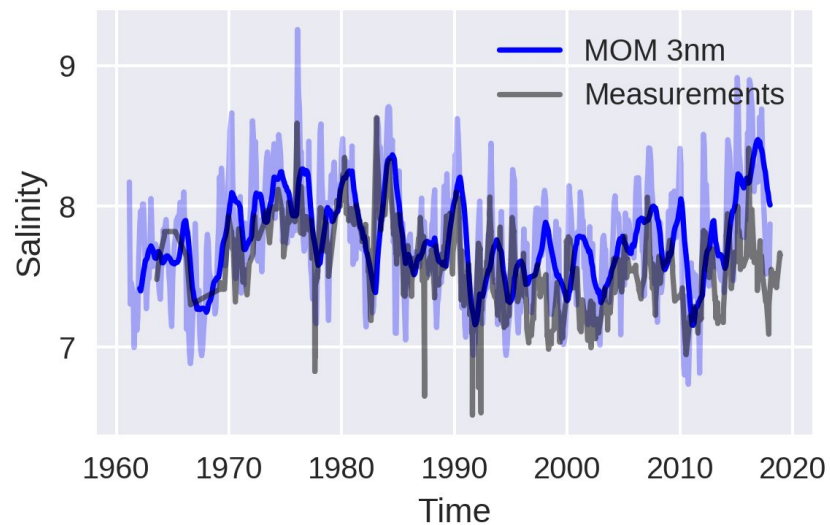
Data: ODIN2

Station BY5 Bottom



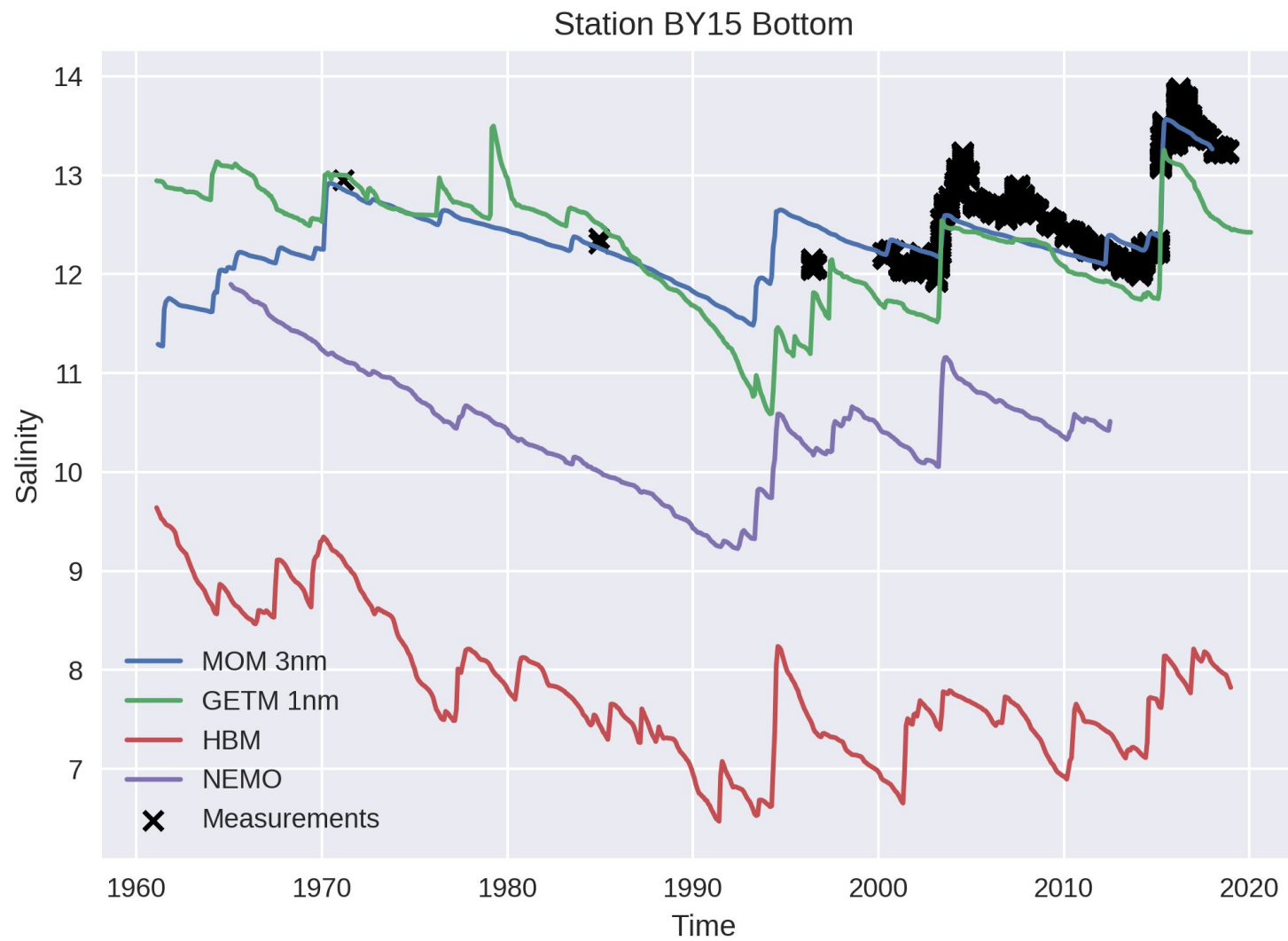
Data: ODIN2

Station BY5 Surface

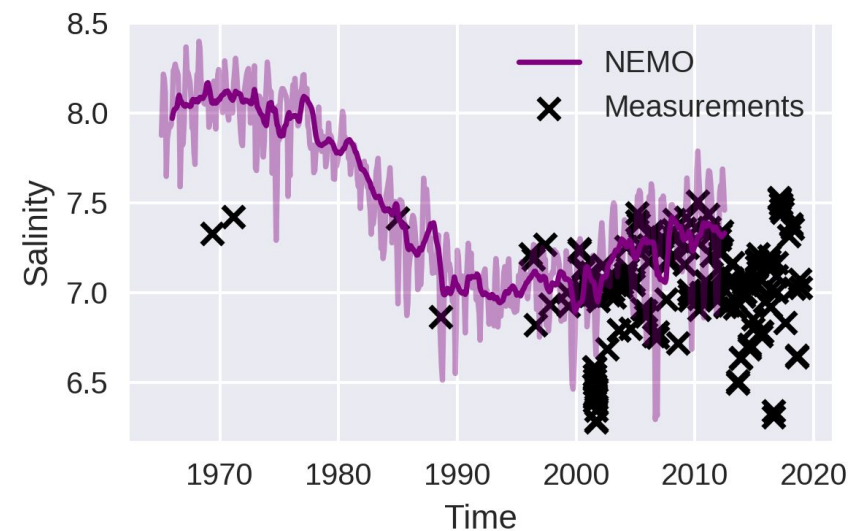
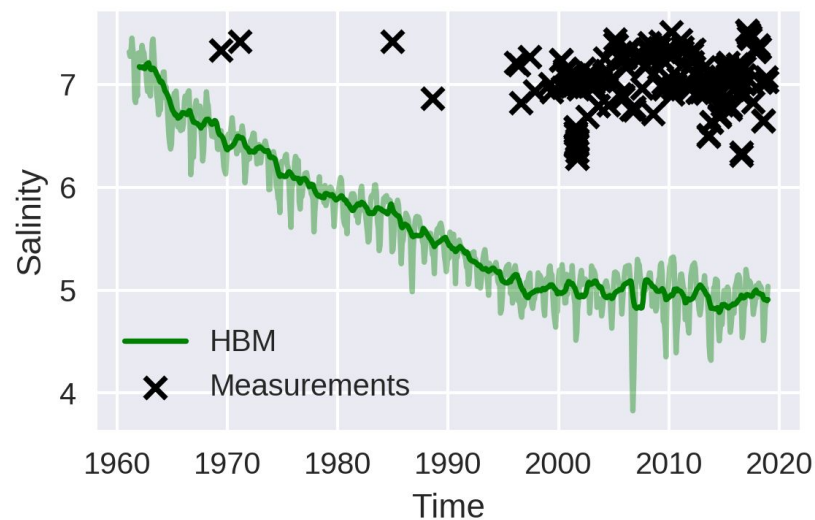
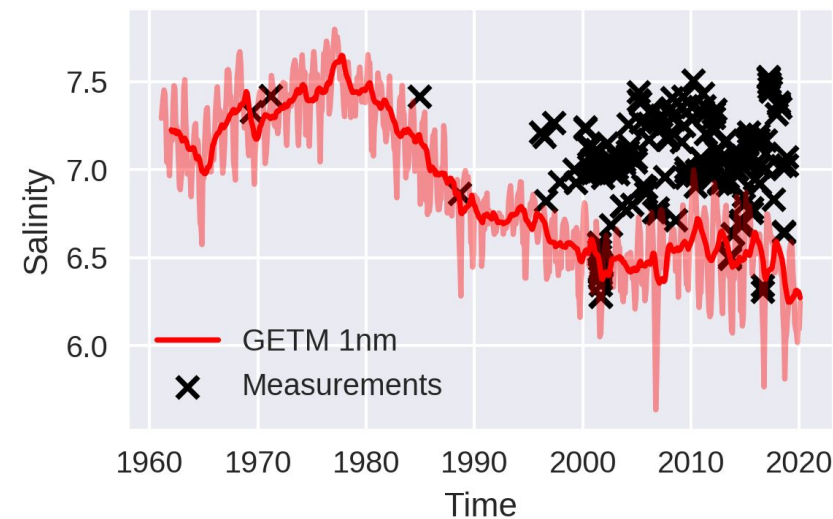
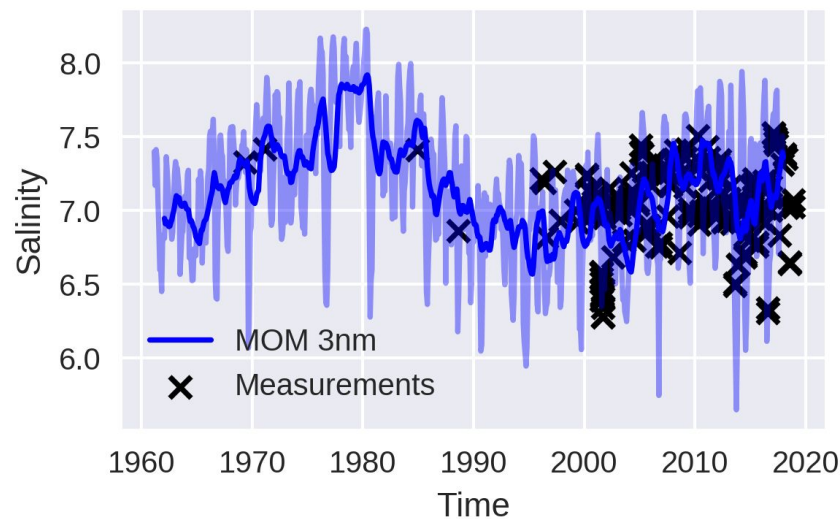


Data: ODIN2

Data: ODIN2

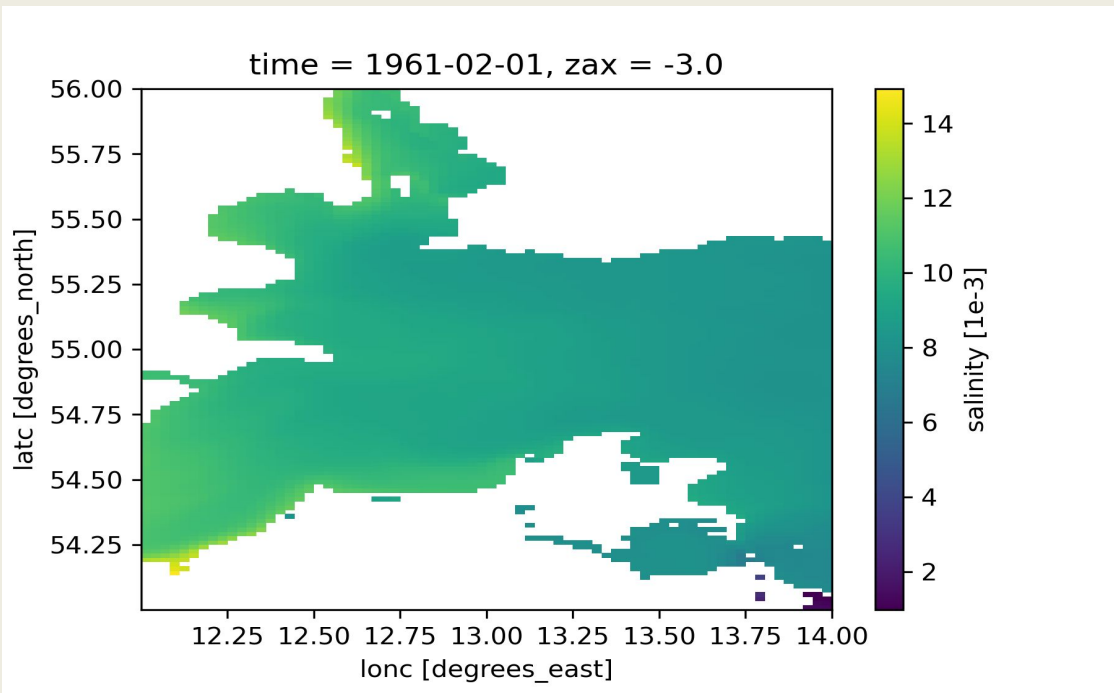


Station BY15 Surface

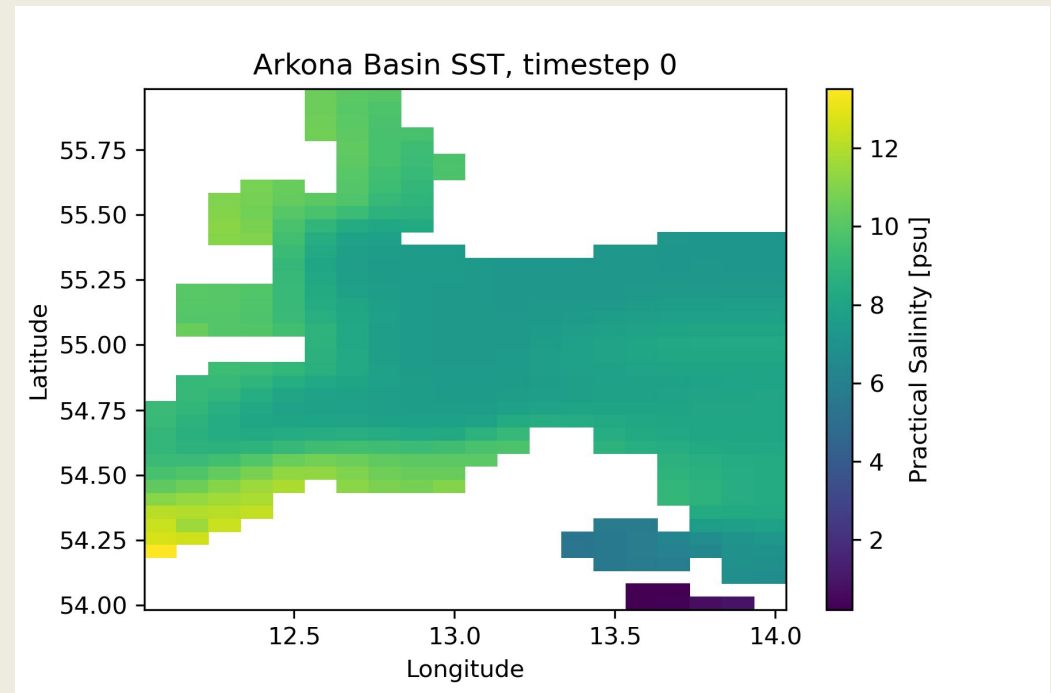


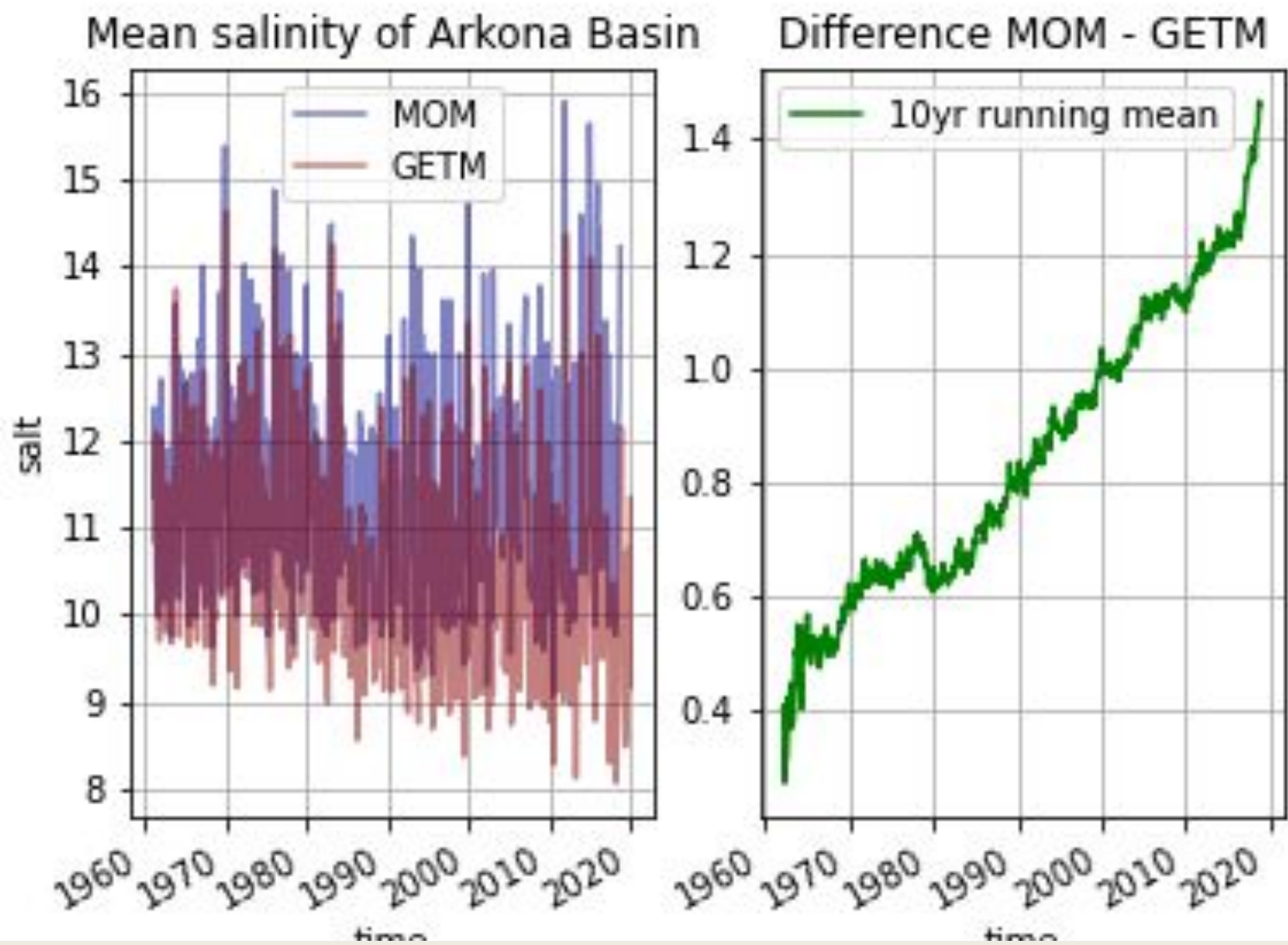
Data: ODIN2

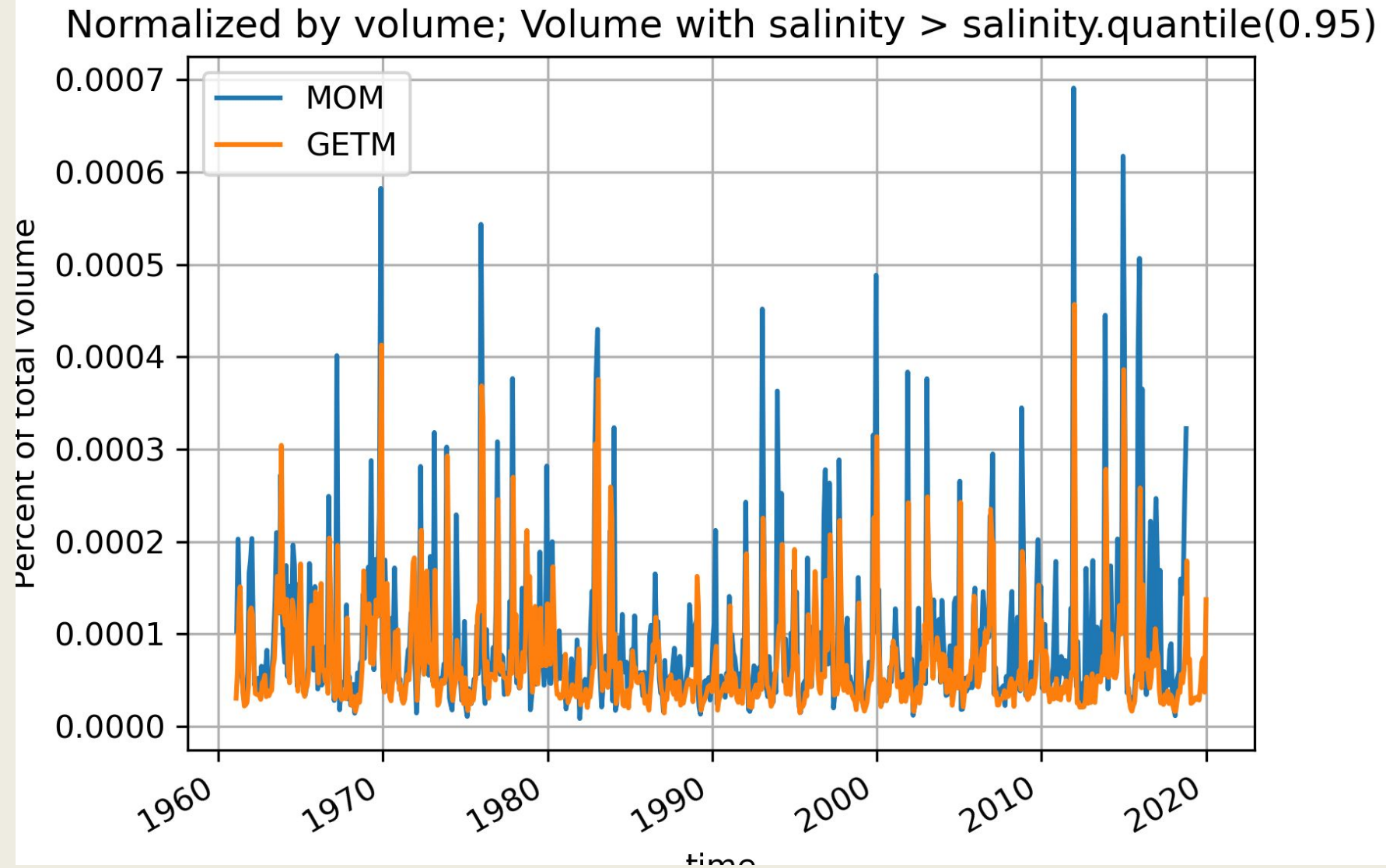
GETM



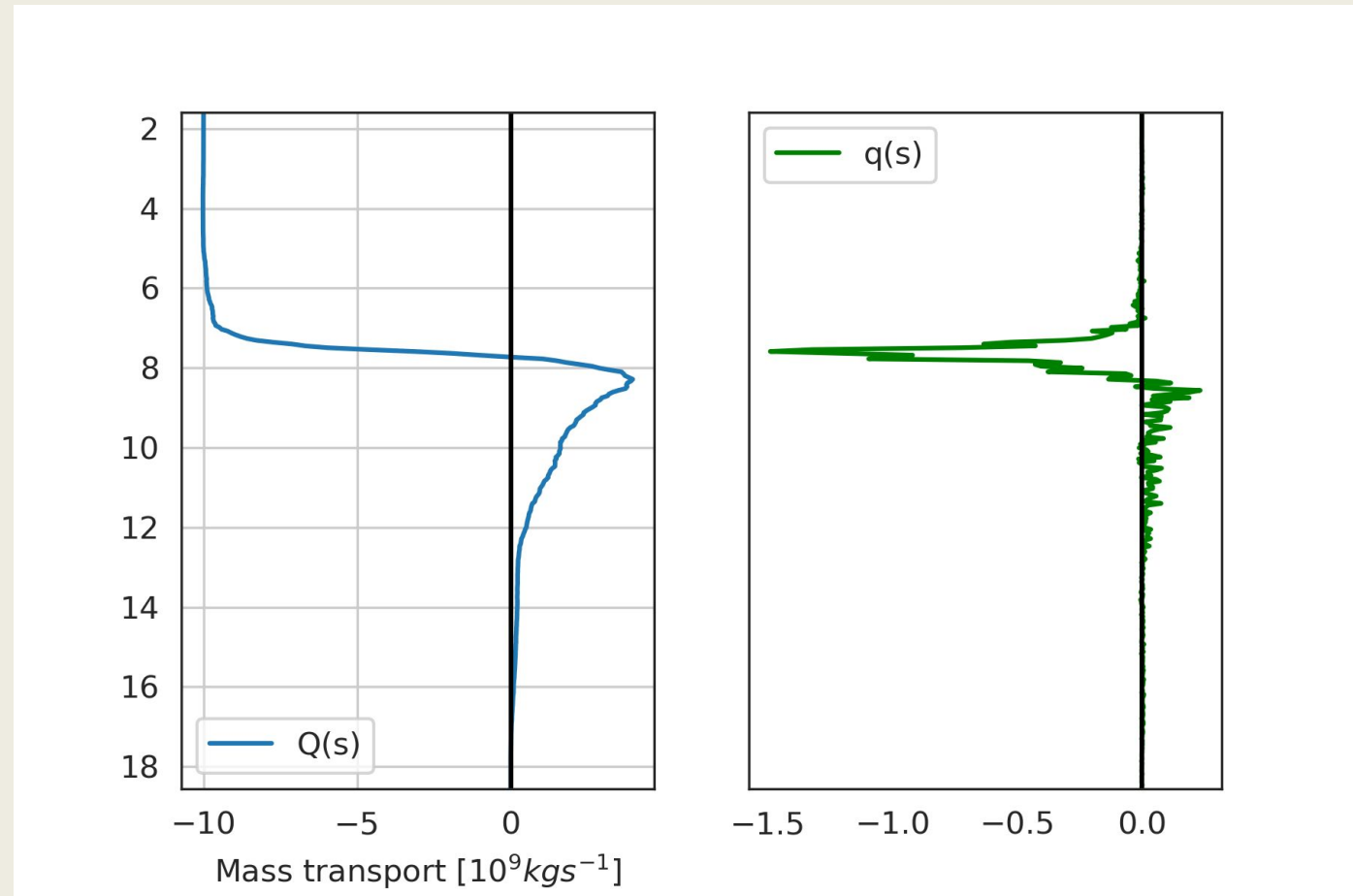
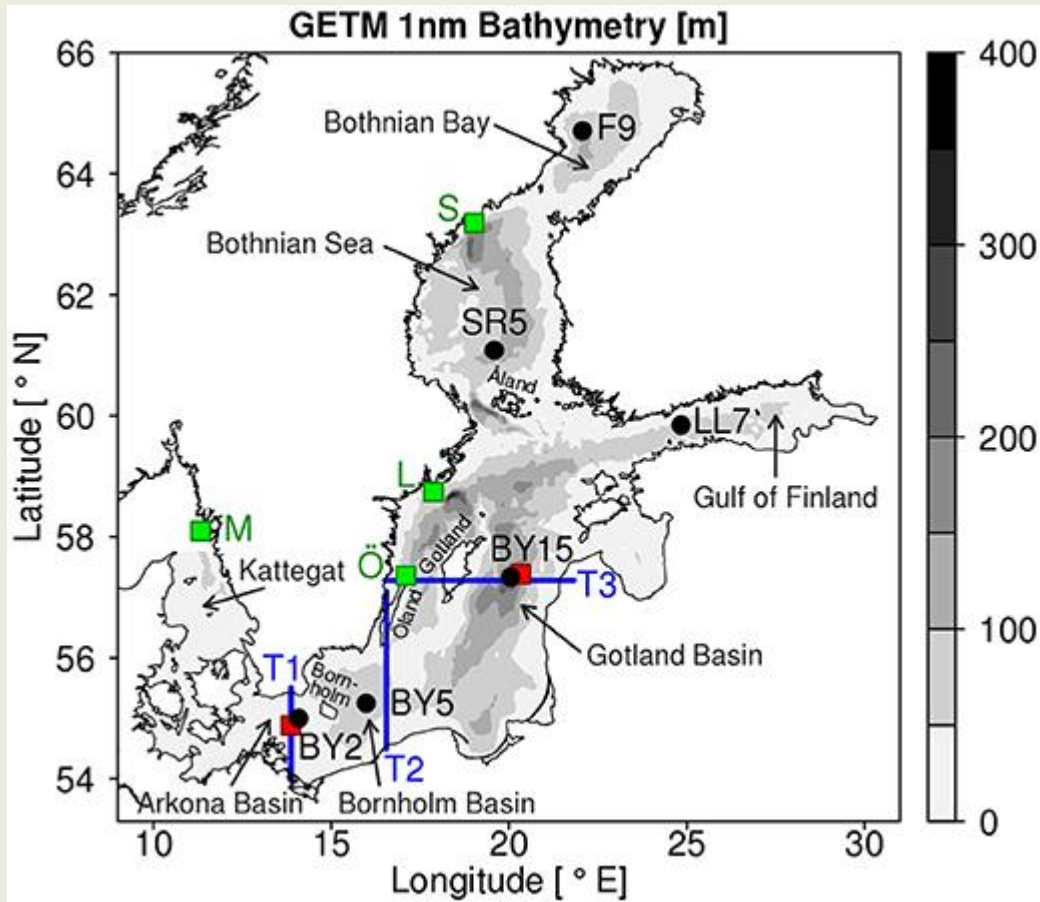
MOM



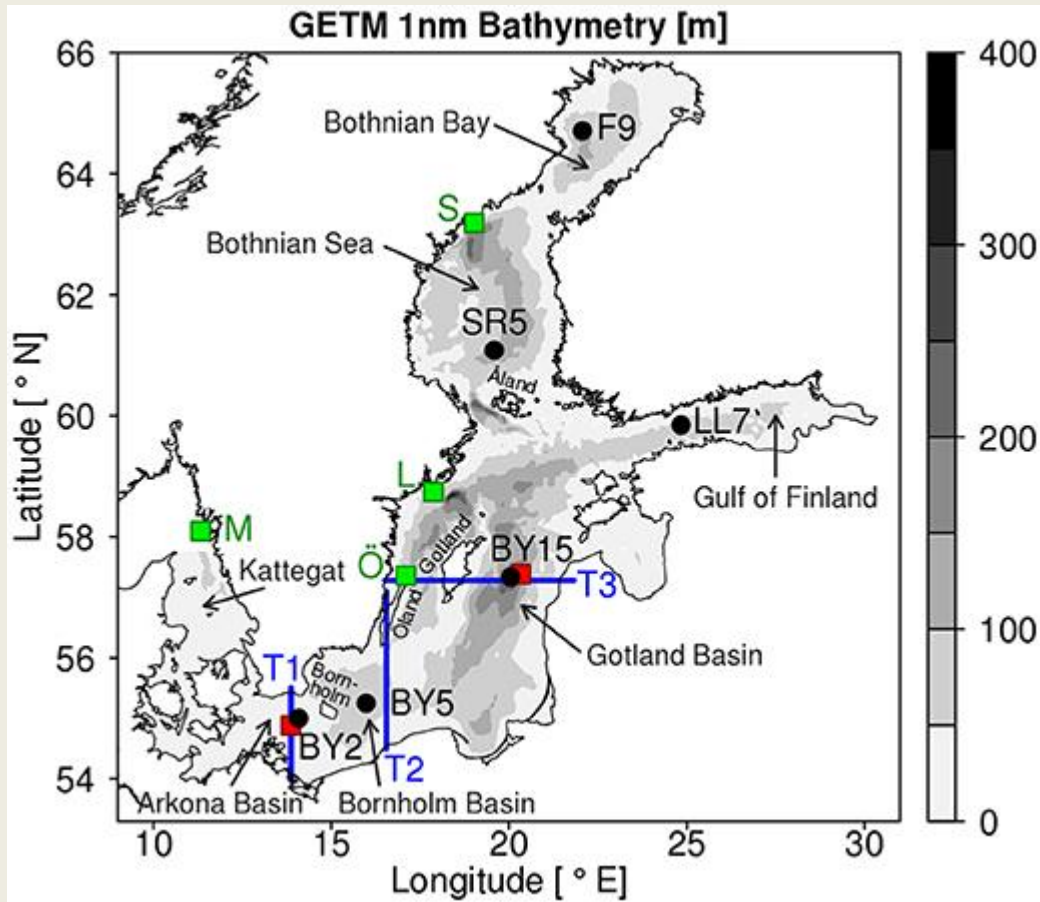




Total Exchange Flow?



What do we need?



- For all models we need the transects that have been defined previously.